

Welcome to 7th Grade Summer Reading!

This summer you are required to read three books. I hope you read much more, however, and if you do, you will even get credit towards your Reader's Workshop 20 book goal!

1. **One School, One Book Requirement:** *Wishtree* by Katherine Applegate. Scroll down to pages 5-7 of this document to see the assignment and question-making template.
2. **Drums, Girls and Dangerous Pie** by Jordan Sonnenblick. Please be prepared to discuss this book in September and write a reflection.
3. **Book of Choice:** Choose 1 book from the following list and complete the accompanying project. See pages 2-4 of this document for the project and rubric. The project will be submitted on the first day of school into Google Classroom. It **MUST** be a Google doc.

Choose One:

Eragon, Christopher Paolini

A Night Divided, Jennifer A. Nielsen

Refugee, Alan Gratz

If You're Reading This, Trent Reedy

Counting by 7s, Holly Goldberg Sloan

No Fixed Address, Susin Nielsen

Anne of Green Gables, by Lucy Maud Montgomery

4. **Additional Reading:** I believe there is a reader in all of us, and I hope you read more than the three assigned books this summer. If you do, you may count up to 5 novels towards your 20 book Reader's Workshop 7th grade goal.

Book of Choice Project: Create a Double Entry Journal.

The **left side** should contain cited text from your reading with page numbers noted. *Text can be dialogue or narrator sentences.* Include the page number(s).

The **right side** should be a response to your chosen text. Responses can include but are not limited to:

- What does this quote tell you about the character? Why?
- What does this text tell you about the plot? Why?
- What was your first thought when you read this? Why?
- How do you feel about this text? Why?
- Does this text relate to anything similar in your life? Why?
- Does this text relate to anything similar in the world? Why?
- Does something confuse you or lead to further questions? Explain.

Create 5 entries. Make sure you cover the beginning, middle, and end of the book.

Type your project into a Google Doc. It should look similar to the template on page 3 of this document. See page 4 for the rubric. On the first day of school in September, come prepared to turn it in on Google Classroom.

Happy Reading!

See you in September!!

Template Example

Book Read:

Author:

Your Name:

Page	Text	Reaction/Analysis

Note: This is an example only. If you would like your chart to look different, go ahead. Just make sure you include all components. Make sure you include at the top of the page your name, fictional book choice, and author.

SKS Summer Reading - 7th Grade Book of Choice

Double Entry Journal Rubric

Evidence: _____ / 45

Evidence includes strong examples of cited text.

Text can be narrator sentences or dialogue.

Page number(s) is/are included.

Punctuation and spelling are correct.

5 examples are included.

Evidence covers the entire book: beginning, middle, and end.

Reaction/Analysis: _____ / 45

Responses show strong connection to the text and your critical thinking.

Responses are detailed, at least 4 sentences. Show you read the book.

Responses show understanding of the book.

The 5 responses cover the entire book: beginning, middle, and end.

Responses are in complete sentences, using correct spelling, punctuation, and grammar.

Adherence to Requirements _____ / 10

Project is typed into a Google Doc and submitted on the first day of school.

Project includes book choice, title, and your full name.

SKS One Book, One School ~ Summer 2021

Required Reading:

Wishtree by Katherine Applegate

Assignment: Entering 7th Grade

1. Read *Wishtree* by Katherine Applegate for pleasure.
2. After reading, write 5 discussion questions that you will share with your class during our September Book Club Meeting.
3. Use the attached sheet to write all questions.
4. Remember, your job is to create a list of questions that will help to discuss the book you are reading. Try to create questions that will make your group really think. The best discussion questions usually come from your own thoughts, feelings, and concerns as you read.
4. Use the “Start a Discussion” question stems if you need help getting started.

Start a Discussion!

Why..

How would you explain...

What is the importance of...

What is the difference between/among...

What is the similarity between/among...

What connection is there between/among...

Describe the...

How does...

How did you feel when...

Name _____

Book Title _____

Discussion Questions

Question #1

Question #2

Question #3

Question #4

Question #5

7th Grade Supply List

All Classes

#2 Pencils

Blue or black pens

Highlighters

Dry Erase markers

Index cards

Art supplies as desired (crayons, colored pencils, scissors, glue, etc)

Lined paper (loose leaf in a section of a binder or a theme tablet)

Specific Class Requirements

Religion - 1 copybook and 1 yoga mat

ELA - 1 copybook or section in a binder, 1 folder (or area in a multi-pocketed folder)

Math - TI-34 calculator and 1 Black marble copybook

Social Studies- 1 copybook and 1 folder (or area in a multi-pocketed folder)

Spanish - 1 copybook (it's ok to use the one from 6th grade if they have it)

With our 1:1 devices, fewer materials are needed; however, please obtain any school materials that you think will help you stay organized.

For your homeroom, please contribute:

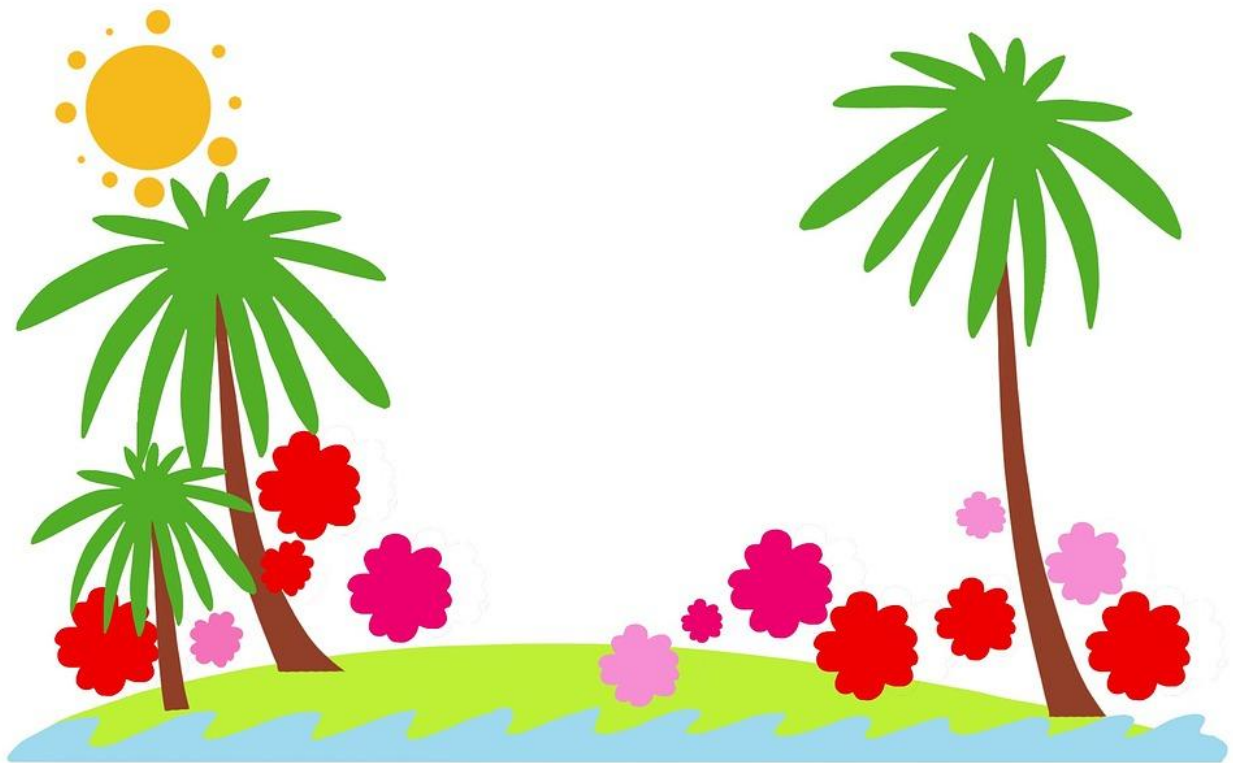
2 boxes of tissues

2 containers of disinfecting wipes

2 rolls of paper towels

7th Grade Summer Math

Name _____



Answer each of the following questions, show work in the space provided. Write the final answer on the Answer line in each box. Turn the packet into your teacher the first week of school.

Find the value of each expression.

1. $8(16+4)$	2. $3(9 - 3 \cdot 2)$	3. $12 \div 3 \cdot 4$	4. $12[3(17-6)-7 \cdot 4]$	5. $\frac{14 + 4}{11 - 2}$
Answer: _____	Answer: _____	Answer: _____	Answer: _____	Answer: _____

Evaluate, if $a = 10$, $b = 8$, $c = 6$ and $d = 12$

6. $14 - a + b^2$	7. $2b - d$	8. $d - c^2$	9. $c + (d-b)$
Answer _____	Answer _____	Answer _____	Answer _____


Translate into an algebraic expression and let n equal the number.

10. Seven more than some number	11. The product of a number and ten	12. Twice as many as last week	13. The difference of a number and twelve	14. Mary's score plus ten points extra credit
Answer _____	Answer _____	Answer _____	Answer _____	Answer _____

Simplify each expression.

15. $7 \cdot 8 + 7 \cdot 3$	16. $7 + 12 - 10$	17. $16 + 2(13)$
Answer _____	Answer _____	Answer _____

Solve for the variable.

18. $h - 15 = 9$	19. $7 = m + 8$	20. $b - 11 = 20$	21. $12 = x - 15$
Answer _____	Answer _____	Answer _____	Answer _____
22. $19 - g = 7$	23. $6n = 84$	24. $\frac{y}{4.5} = 16$	
Answer _____	Answer _____	Answer _____	

Find the following areas and perimeters.

25. Area and perimeter of a rectangle if the length is 17ft. And the width is 20 ft.	26. Area and perimeter of a square with $s = 14m$
Answer _____	Answer _____

Simplify

27. $ -31 $	28. $ 24 $	29. $4\frac{7}{15} + 2\frac{3}{10}$	30. $7\frac{5}{8} - 2\frac{1}{4}$	31. $2\frac{2}{3} \cdot 3\frac{2}{3}$
Answer _____	Answer _____	Answer _____	Answer _____	Answer _____
32. $4\frac{1}{5} \div 4\frac{1}{3}$	33. $1.025 + 2.3$	34. $23.7 - 19.28$	35. 1.002×7.3	36. $.27 \div 4.5$
Answer _____	Answer _____	Answer _____	Answer _____	Answer _____

Simply the following

37. $-4-5$	38. $8 + (-11)$	39. $-15 + 9$	40. $-33-3$	41. $-4-7$
Answer _____	Answer _____	Answer _____	Answer _____	Answer _____
42. $-9 \cdot 4$	43. $-33-(-33)$	44. $(-11)(-15)$	45. $-6 + (-18) + 40$	46. $(-2) (3) (4)$
Answer _____	Answer _____	Answer _____	Answer _____	Answer _____

Find the GCF and the LCM for each of the following.

47. 16 and 42 GCF _____ LCM _____	48. 7 and 9 GCF _____ LCM _____
--	--

Answer the following questions about percents.

49. Change 33% to a decimal Answer _____	50. Change 40% to a fraction in lowest terms. Answer _____	51. Change $\frac{1}{5}$ to a percent. Answer _____
52. What percent of 25 is 2? Answer _____	53. Find 10% of 25. Answer _____	54. 25% of what number is 20? Answer _____

Problem Solving

55. A student is building a square pen 21 feet long on each side. She puts one post at each corner and one post every 3 feet in between. How many posts will she use?
